

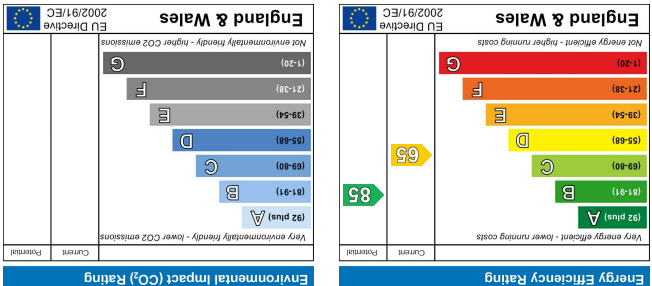


These particulars, whilst believed to be accurate are set out as a general outline only for guidance and do not constitute any part of an offer or contract. Intending purchasers should not rely on them as statements of representation of fact, but must satisfy themselves by inspection or otherwise as to their accuracy. No person in this firm's employment has the authority to make or give any representation or warranty in respect of the property.

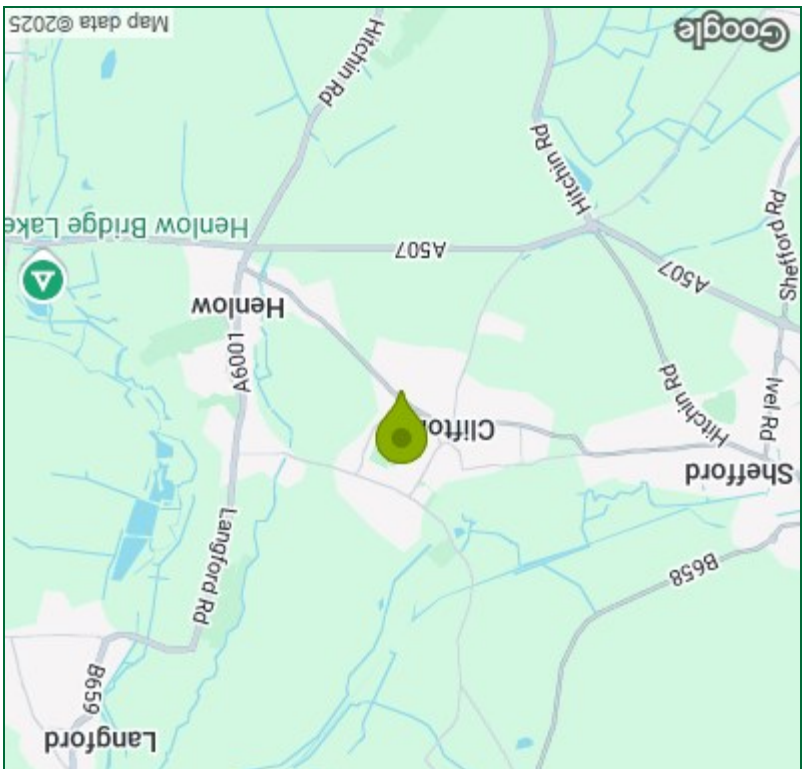
Viewing

Please contact our Shefford Office on 01462 814087

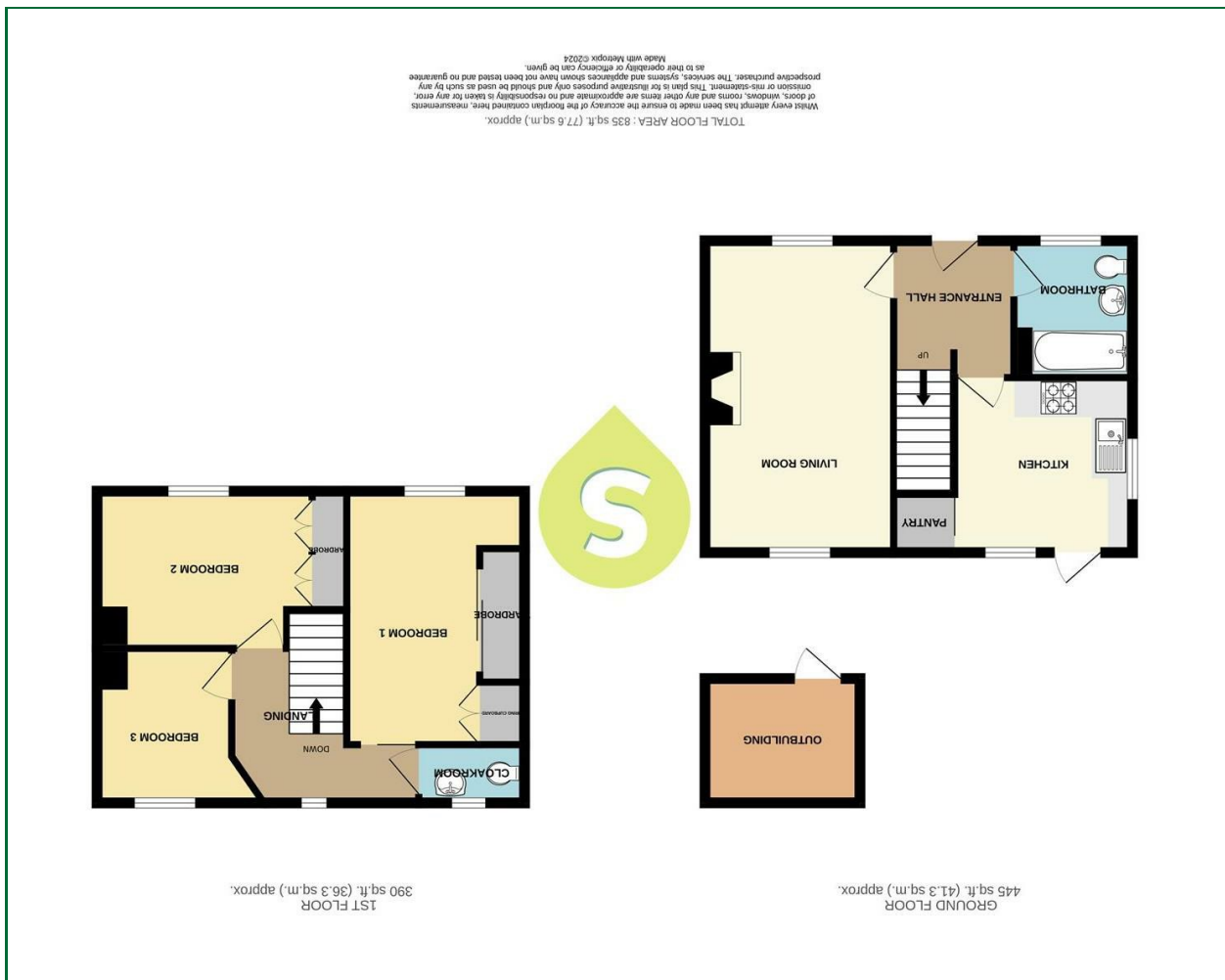
If you wish to arrange a viewing appointment for this property or require further information.



Energy Efficiency Graph



Area Map



Floor Plan



Hitchin Lane,
Clifton | Beds
£350,000



Entrance Hall
Entrance door, stairs to first floor.

Living Room
17'0" x 10'4"
Dual aspect room with windows to front and rear, fireplace with brick surround and tiled hearth, two radiators.

Kitchen
10'0" x 9'0"
Fitted kitchen with a range of base and eye level units with roll top work surfaces, acrylic sink unit with mixer tap, tiled splash back, electric cooker point, two windows to rear and side, door to garden, fitted pantry, radiator.

Bathroom
Refitted white suite comprising of enclosed bath, low level w.c, wash hand basin in vanity unit, fully tiled walls, tiled floor, radiator, window to front.

Landing
Window to rear.

Bedroom One
13'9" x 10'0"
Window to front, radiator, sliding patio door to garden, fitted airing cupboard with hot water tank.

Bedroom Two
11'10" x 8'6"
Window to front, fitted four door wardrobe, radiator.



Bedroom Three
8'2" x 7'4"
Window to rear, radiator.

Cloakroom
Low level w.c, wash hand basin, window to rear, radiator.

Front Garden
Gravelled driveway providing off road parking for two cars, concrete driveway leading to garage and rear garden, gated access to garden.

Rear Garden
A large, fully enclosed rear garden with large, paved patio area rest laid mainly to lawn with a variety of trees and shrubs.

Outhouse
8'3" x 6'9"
Brick built with power and light.

Garage
Up and over door, power and light.

